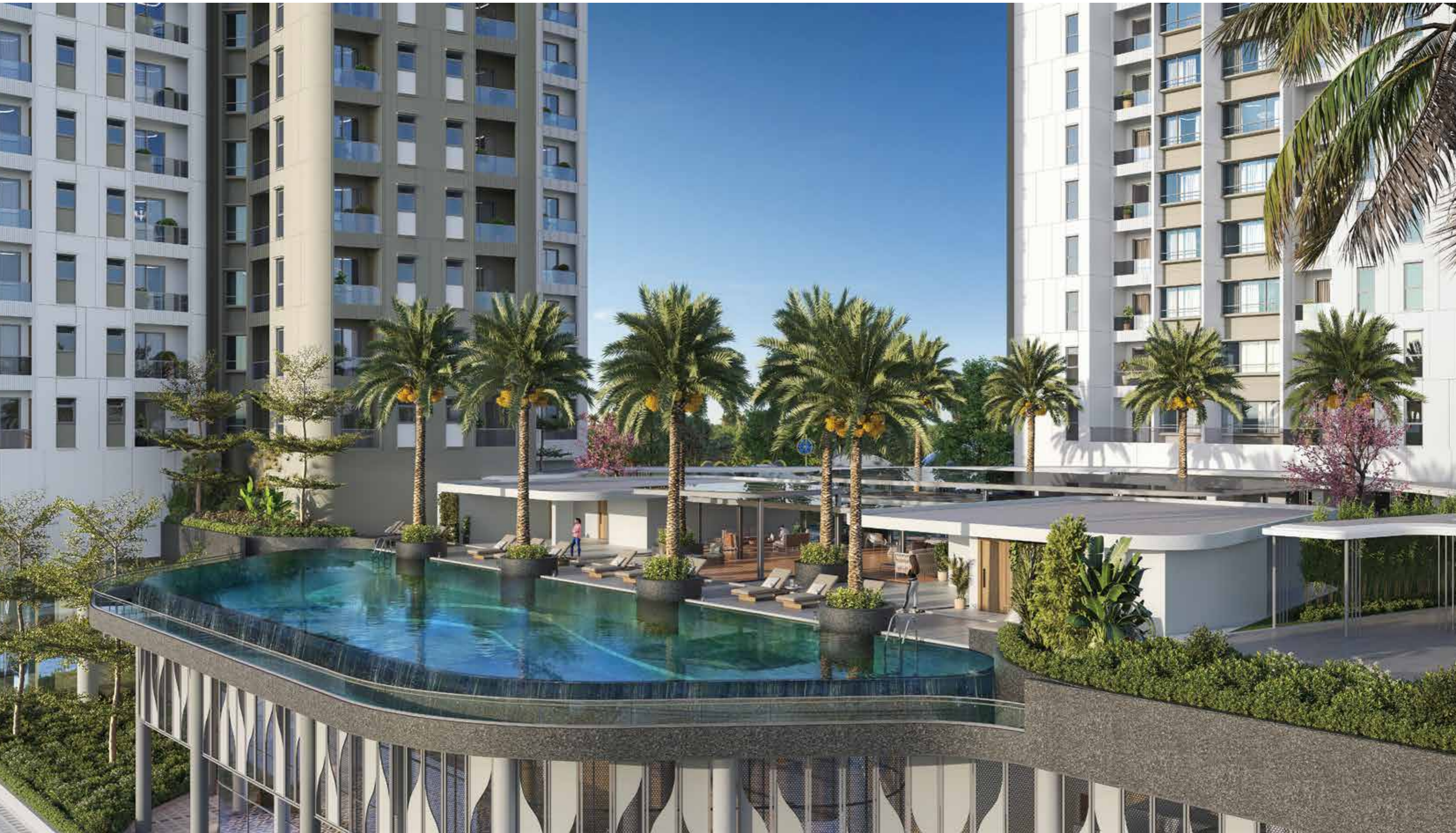


 **SATTVA**  
**AARANYA**



**FLOOR PLAN BOOKLET**







Banglore University

**JNANA BHARATHI**  
600-acre greenery

Nayandahalli Lake

**NAYANDAHALLI**

Myusuru Road Metro Station

Global Mall

Sattva Melody

**PRAMOD LAYOUT**

Outer Ring Road

Banglore University Road

**MUTHARAYANA NAGAR**

Jnanabharathi Metro Station

Gopalan Arcade Mall

Shri Hanumantaraaya Swami Temple

**SATTVA AARANYA**

**KENCHENHALLI**

Rajarajeshwari Temple

Rajarajeshwari Temple Road

**LOCATION HIGHLIGHTS**

**Key connectivity**

- Jnanabharathi Metro Station - 1 minute | 0.05 kilometer
- NICE Ring Road - 12 minutes | 6 kilometers
- Sattva Global City - 5 minutes | 2 kilometers

**Schools and colleges**

- Bangalore University Campus - Next to our property
- National Hill View school - 10 minutes | 2.5 kilometers
- Orchid school - 5 minutes | 2.5 kilometers
- Carmel Public school - 5 minutes | 3.5 kilometers
- RV College of Engineering - 5 minutes | 1.8 kilometers

**Hospitals**

- Vijaya Hospital, Kengeri - 5 minutes | 3 kilometers
- BGS Gleneagles Global Hospital - 12 minutes | 5 kilometers
- Rajarajeshwari Medical College and Hospital - 15 minutes | 6 kilometers
- Sparsh Hospital, RR Nagar - 10 minutes | 3 kilometers

**Malls and entertainment hubs**

- Divinity Mall - 5 minutes | 3 kilometers
- Gopalan Arcade Mall - 5 minutes | 1 kilometer
- Orion Mall, Rajajinagar - 30 minutes | 12 kilometers

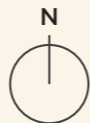
**Other landmarks**

- Rajarajeshwari Temple - 5 minutes | 1.5 kilometers
- ISKCON Temple - 30 minutes | 13 kilometers

--- Metro line  
 ——— Roads



Scan for location





**Legend**

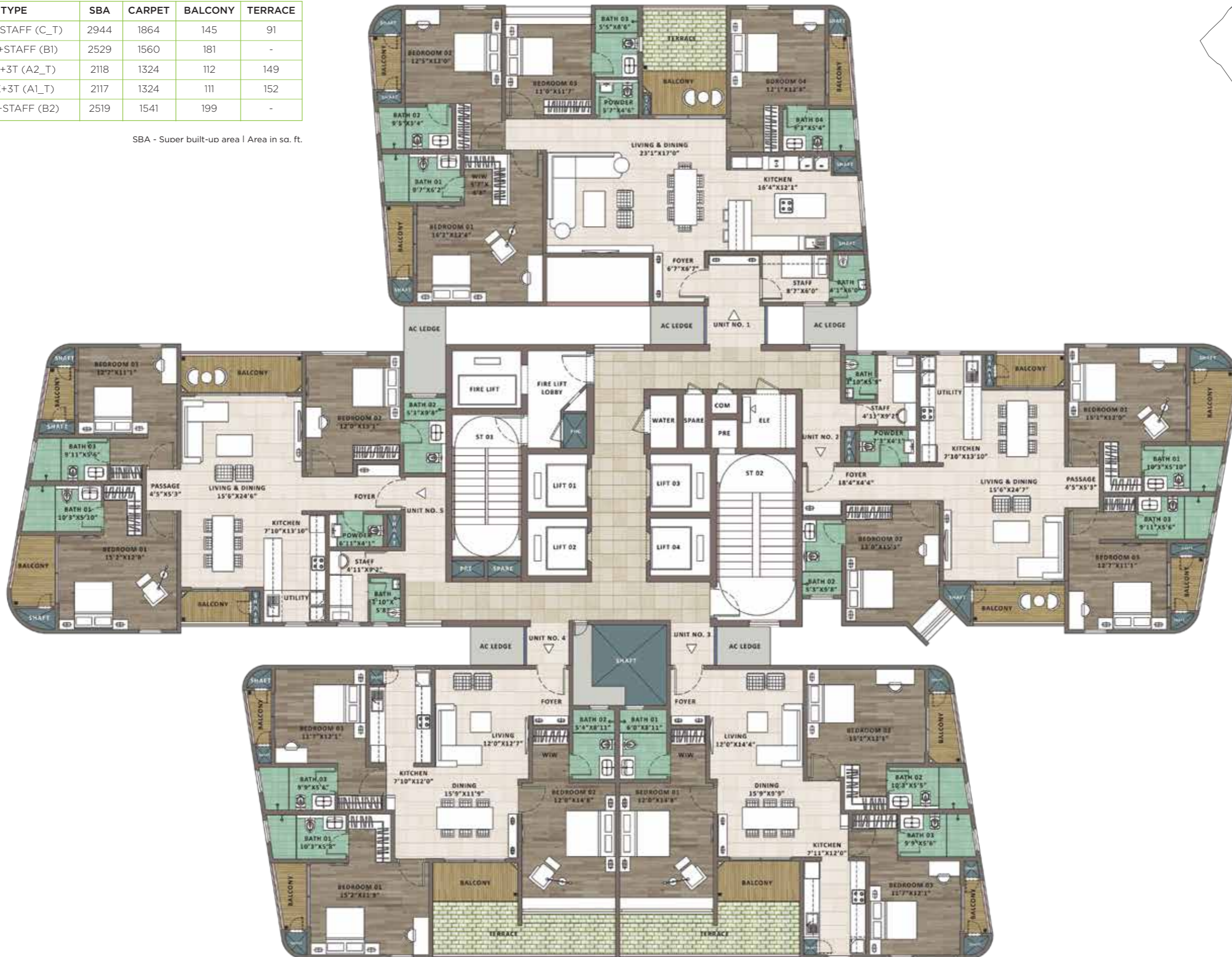
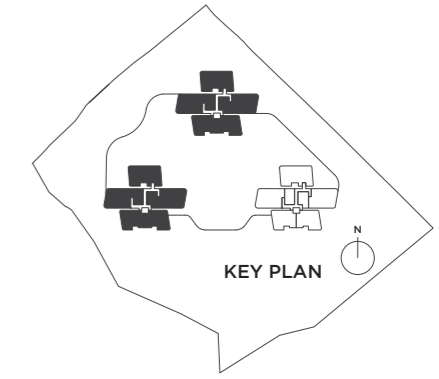
- 01. Entrance plaza
- 02. Entry
- 03. Exit
- 04. Water body
- 05. Sculpture
- 06. Drop-off plaza
- 07. Community garden
- 08. Tree deck
- 09. Mound
- 10. Cricket practice pitch
- 11. Kid's play area
- 12. Lawn play area
- 13. Function lawn
- 14. Tennis court
- 15. Youth corner
- 16. Multiplay court
- 17. Floral trellis
- 18. Fitness station
- 19. Gazebo
- 20. Stage
- 21. Celebration lawn
- 22. Amphitheatre
- 23. Pet park
- 24. Reading nook
- 25. Car parking
- 26. Reflexology walk
- 27. Temple court
- 28. Temple
- 29. Winter lounge
- 30. View deck
- 31. Tot lot
- 32. Pool side party lawn
- 33. Seniors enclave
- 34. Stepped seater
- 35. Lawn and movie screen
- 36. Summer lounge
- 37. Kids pool
- 38. Family pool
- 39. Pool lounge canopy above
- 40. Infinity lap pool
- 41. Trellis seating
- 42. Function lawn
- 43. Barbeque pergola above
- 44. Artificial lawn
- 45. Walkway
- 46. Outdoor gym
- 47. Youth corner



# Tower A and C - 3<sup>rd</sup> floor

SL NO.	TYPE	SBA	CARPET	BALCONY	TERRACE
1	4BHK+STAFF (C_T)	2944	1864	145	91
2	3BHK+STAFF (B1)	2529	1560	181	-
3	3BHK+3T (A2_T)	2118	1324	112	149
4	3BHK+3T (A1_T)	2117	1324	111	152
5	3BHK+STAFF (B2)	2519	1541	199	-

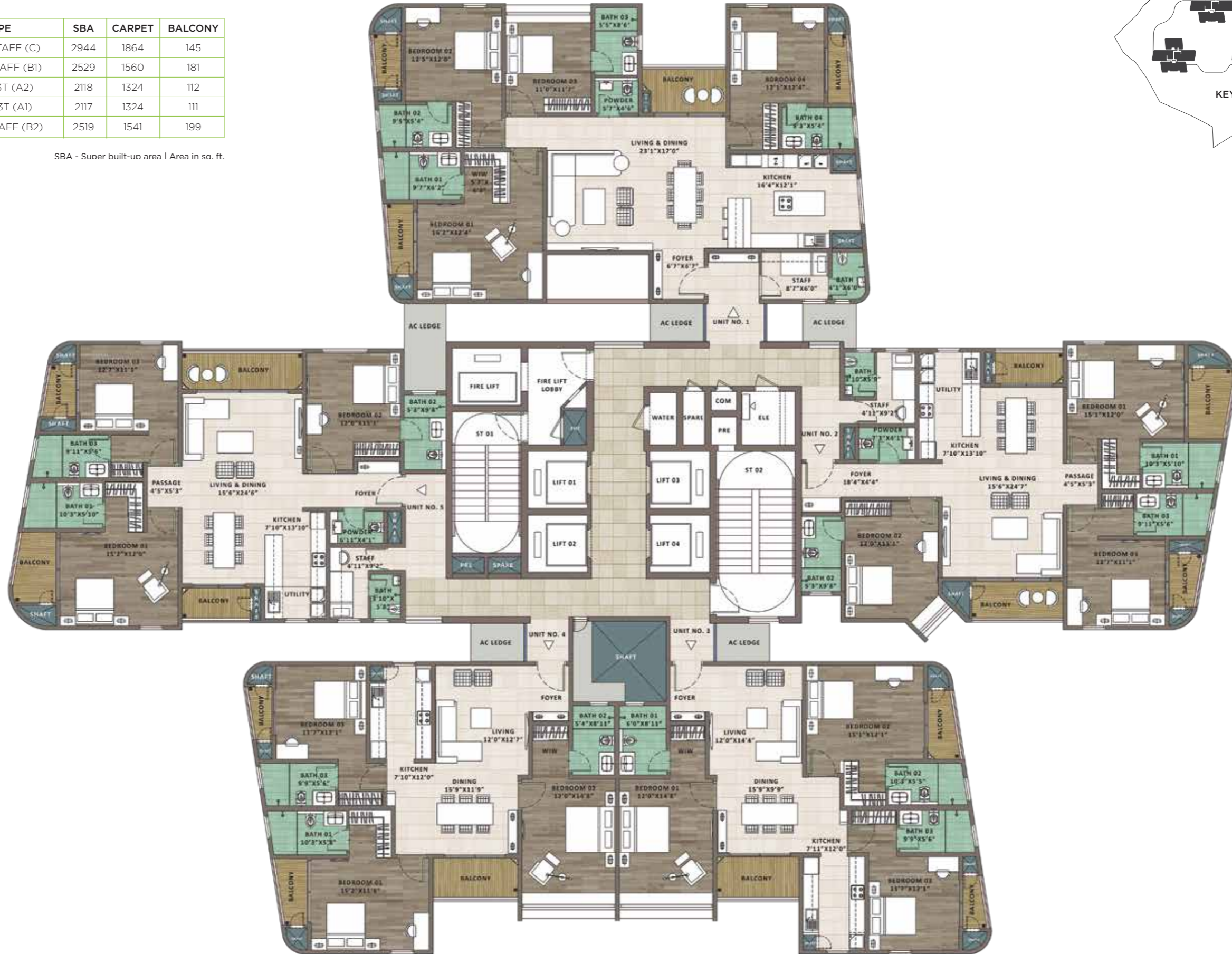
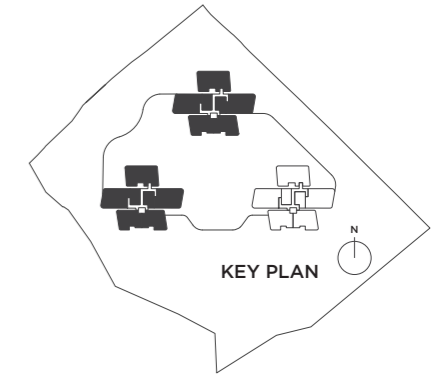
SBA - Super built-up area | Area in sq. ft.



# Tower A and C - 4<sup>th</sup> to 6<sup>th</sup>, 8<sup>th</sup> to 10<sup>th</sup>, 12<sup>th</sup> to 14<sup>th</sup>, 16<sup>th</sup>, 18<sup>th</sup>, 20<sup>th</sup> to 22<sup>nd</sup>, 24<sup>th</sup>, 25<sup>th</sup>, 28<sup>th</sup> and 29<sup>th</sup> floor plan

SL NO.	TYPE	SBA	CARPET	BALCONY
1	4BHK+STAFF (C)	2944	1864	145
2	3BHK+STAFF (B1)	2529	1560	181
3	3BHK+3T (A2)	2118	1324	112
4	3BHK+3T (A1)	2117	1324	111
5	3BHK+STAFF (B2)	2519	1541	199

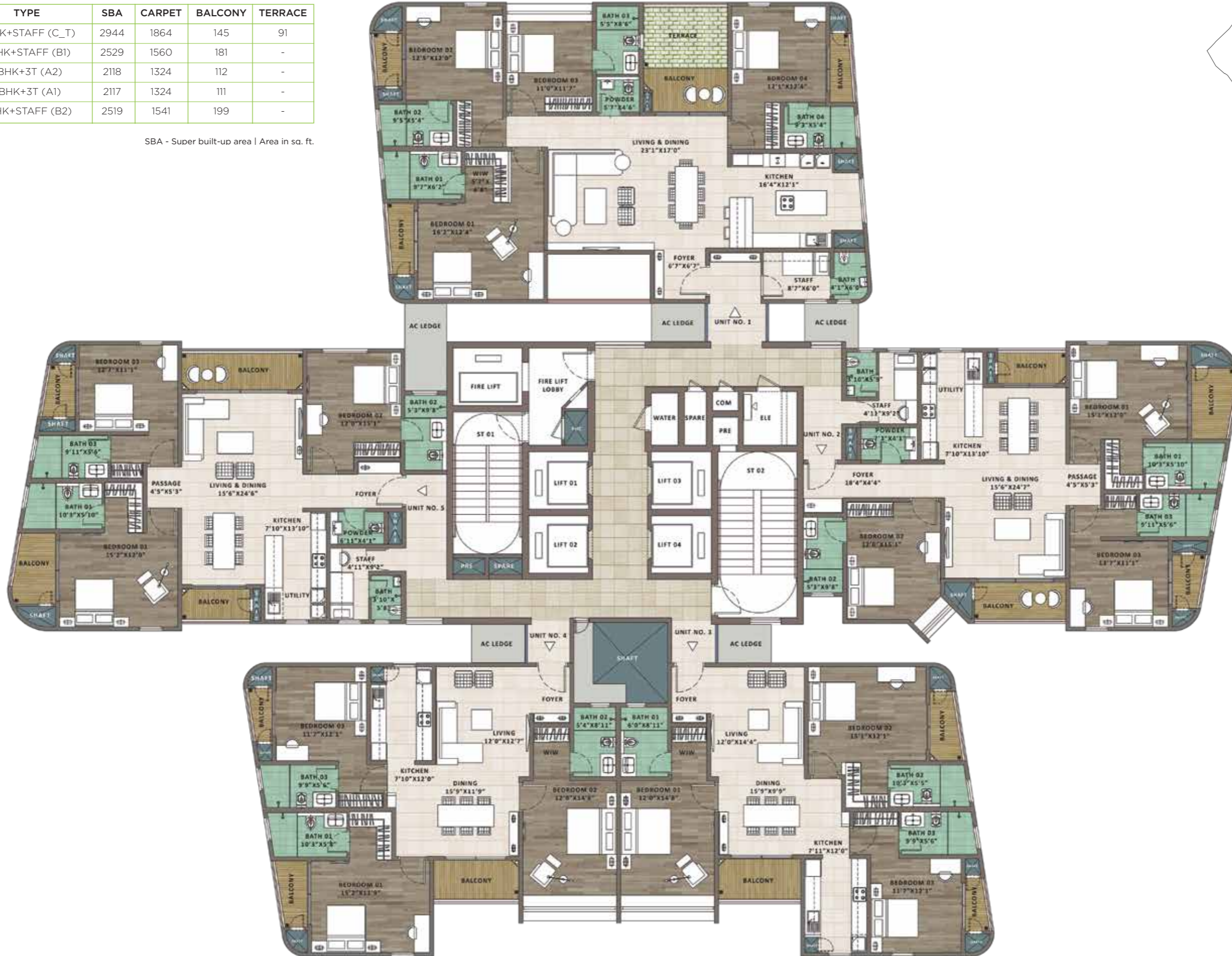
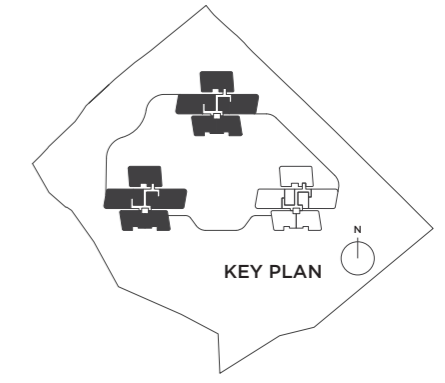
SBA - Super built-up area | Area in sq. ft.



# Tower A and C - 7<sup>th</sup>, 11<sup>th</sup>, 15<sup>th</sup>, 19<sup>th</sup>, 23<sup>rd</sup> and 27<sup>th</sup> floor plan

SL NO.	TYPE	SBA	CARPET	BALCONY	TERRACE
1	4BHK+STAFF (C_T)	2944	1864	145	91
2	3BHK+STAFF (B1)	2529	1560	181	-
3	3BHK+3T (A2)	2118	1324	112	-
4	3BHK+3T (A1)	2117	1324	111	-
5	3BHK+STAFF (B2)	2519	1541	199	-

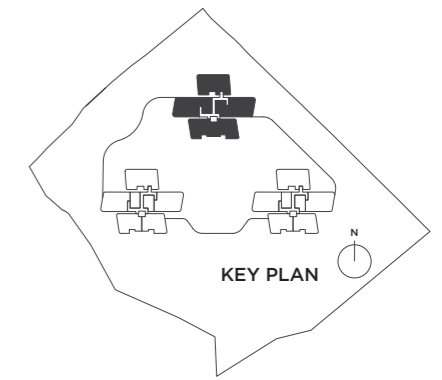
SBA - Super built-up area | Area in sq. ft.



# Tower A - 30<sup>th</sup> floor plan

SL NO.	TYPE	SBA	CARPET	BALCONY
1	4BHK+STAFF (C)	2944	1864	145
3	3BHK+3T (A2)	2118	1324	112
4	3BHK+3T (A1)	2117	1324	111

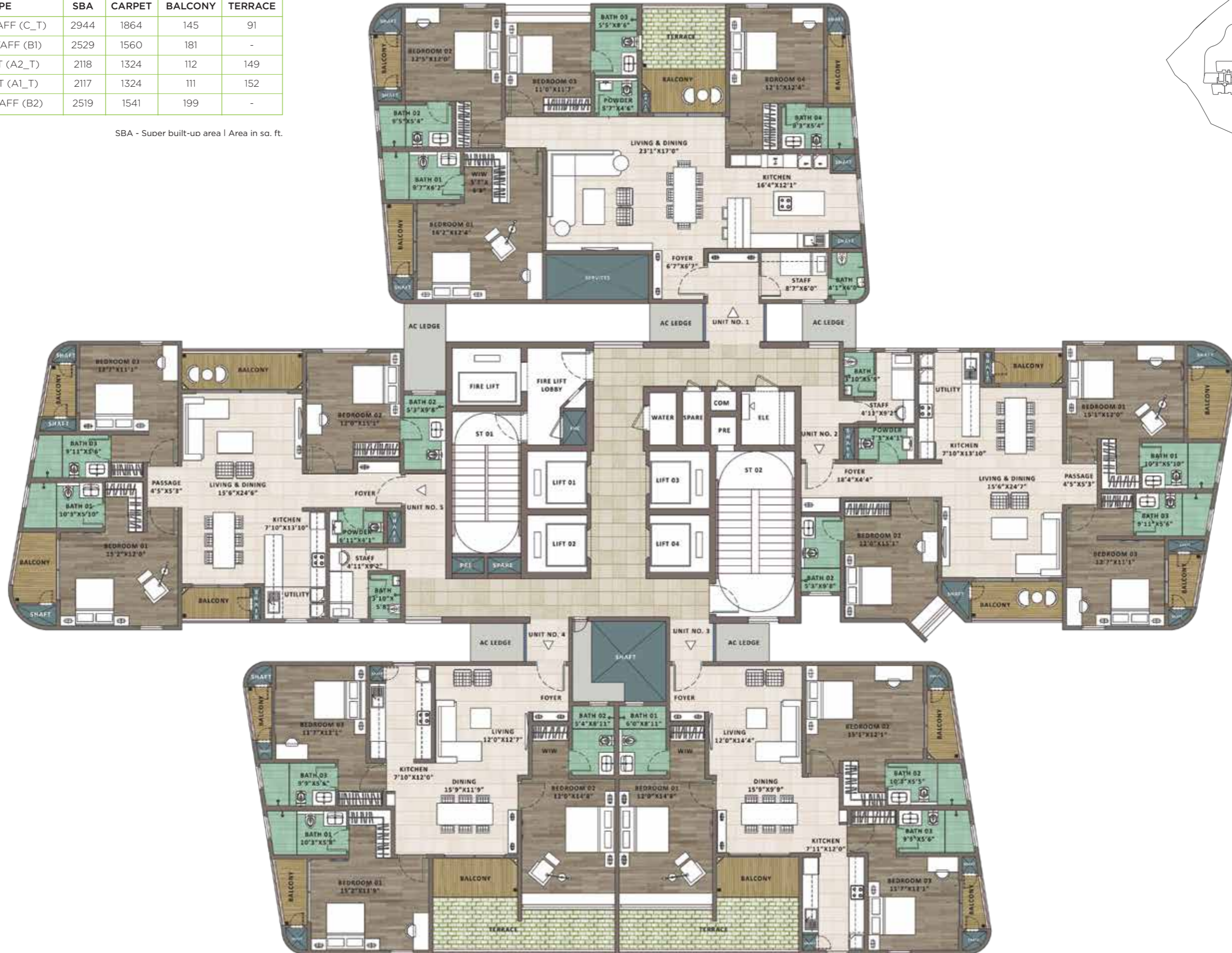
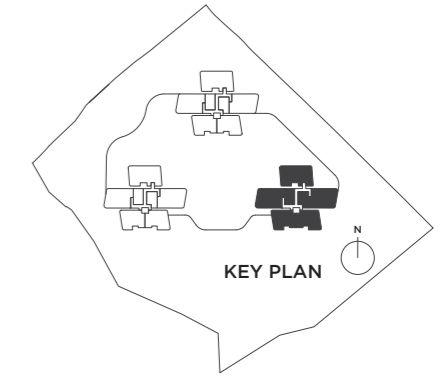
SBA - Super built-up area | Area in sq. ft.



# Tower B - 3<sup>rd</sup> floor plan

SL NO.	TYPE	SBA	CARPET	BALCONY	TERRACE
1	4BHK+STAFF (C_T)	2944	1864	145	91
2	3BHK+STAFF (B1)	2529	1560	181	-
3	3BHK+3T (A2_T)	2118	1324	112	149
4	3BHK+3T (A1_T)	2117	1324	111	152
5	3BHK+STAFF (B2)	2519	1541	199	-

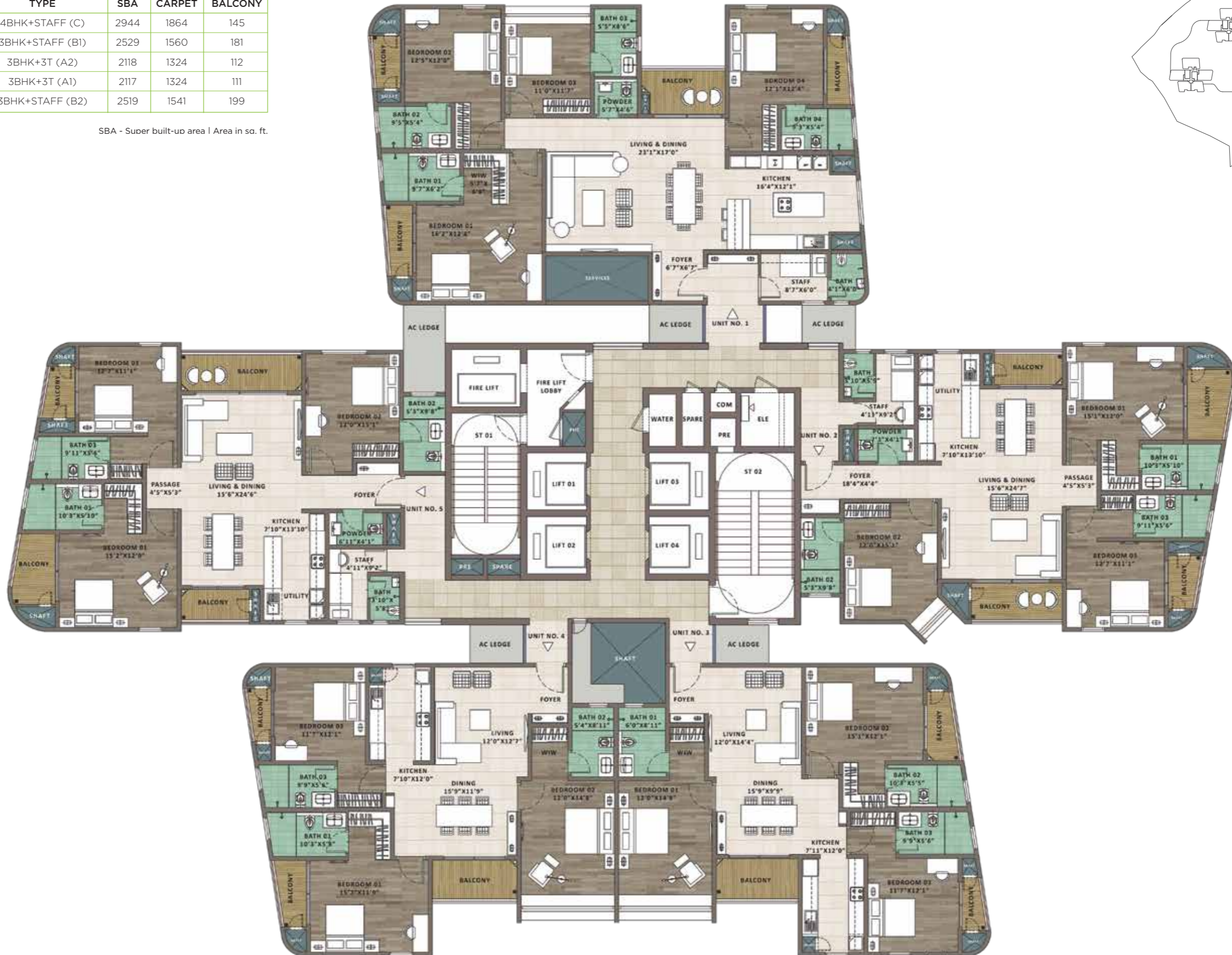
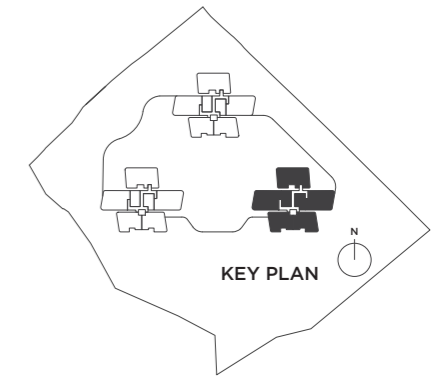
SBA - Super built-up area | Area in sq. ft.



# Tower B - 4<sup>th</sup> to 6<sup>th</sup>, 8<sup>th</sup> to 10<sup>th</sup>, 12<sup>th</sup> to 14<sup>th</sup>, 16<sup>th</sup>, 18<sup>th</sup>, 20<sup>th</sup> to 22<sup>nd</sup>, 24<sup>th</sup>, 25<sup>th</sup> and 28<sup>th</sup> to 30<sup>th</sup> floor plan

SL NO.	TYPE	SBA	CARPET	BALCONY
1	4BHK+STAFF (C)	2944	1864	145
2	3BHK+STAFF (B1)	2529	1560	181
3	3BHK+3T (A2)	2118	1324	112
4	3BHK+3T (A1)	2117	1324	111
5	3BHK+STAFF (B2)	2519	1541	199

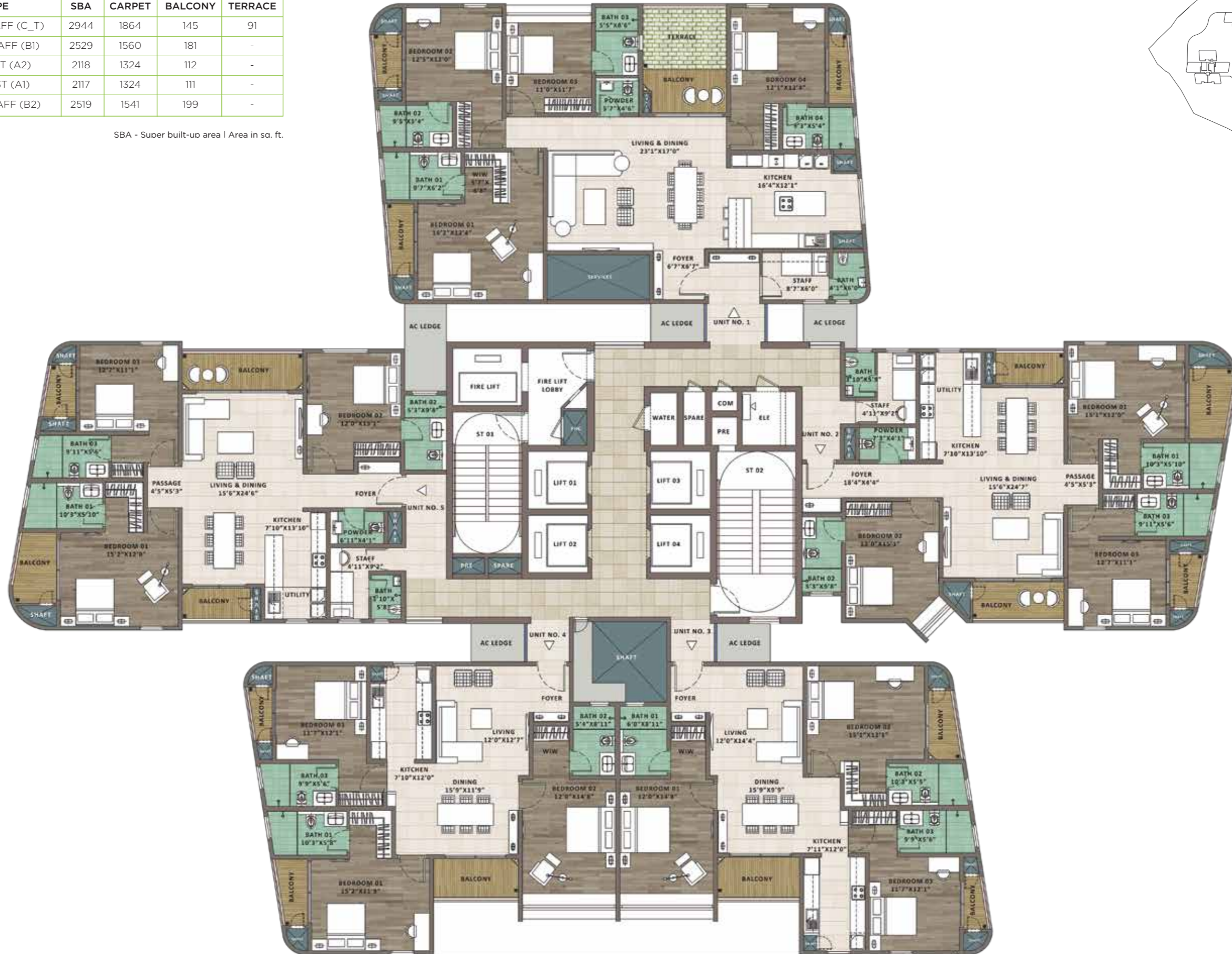
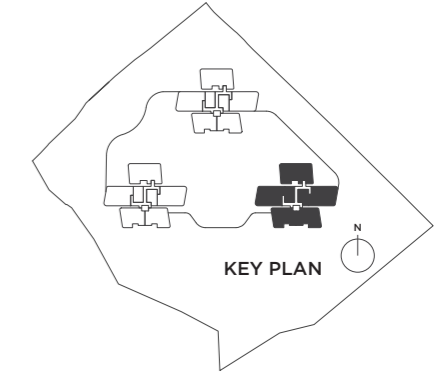
SBA - Super built-up area | Area in sq. ft.



# Tower B – 7<sup>th</sup>, 11<sup>th</sup>, 15<sup>th</sup>, 19<sup>th</sup>, 23<sup>rd</sup> and 27<sup>th</sup> floor plan

SL NO.	TYPE	SBA	CARPET	BALCONY	TERRACE
1	4BHK+STAFF (C_T)	2944	1864	145	91
2	3BHK+STAFF (B1)	2529	1560	181	-
3	3BHK+3T (A2)	2118	1324	112	-
4	3BHK+3T (A1)	2117	1324	111	-
5	3BHK+STAFF (B2)	2519	1541	199	-

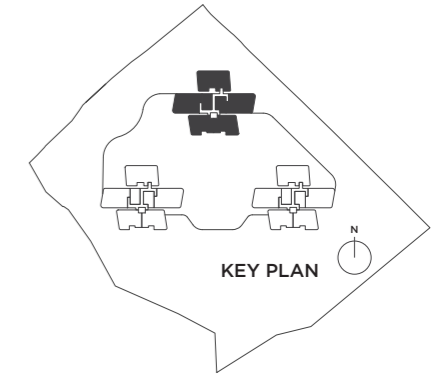
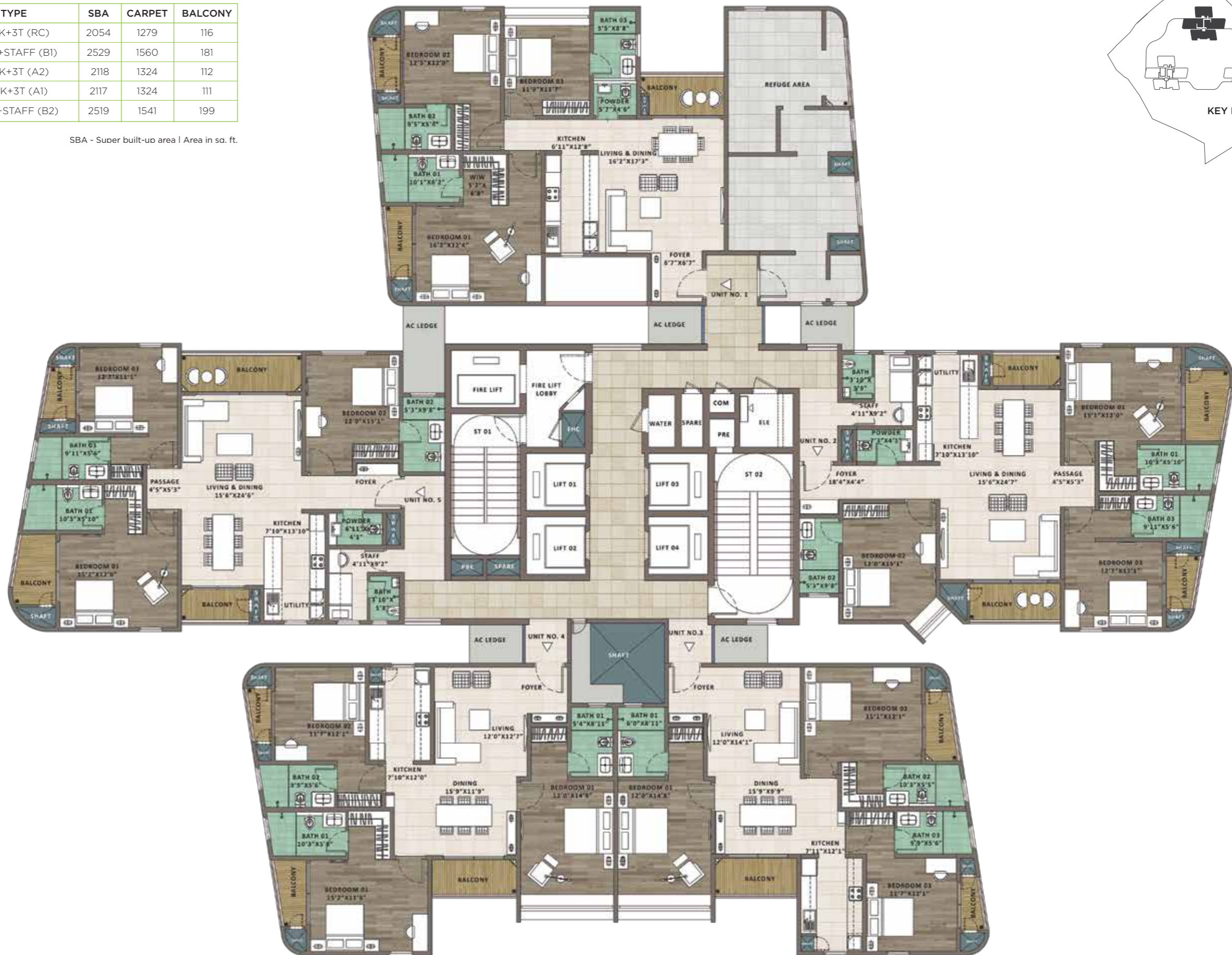
SBA - Super built-up area | Area in sq. ft.



# Tower A - Refuge 17<sup>th</sup> and 26<sup>th</sup> floor plan

SL NO.	TYPE	SBA	CARPET	BALCONY
1	3BHK+3T (RC)	2054	1279	116
2	3BHK+STAFF (B1)	2529	1560	181
3	3BHK+3T (A2)	2118	1324	112
4	3BHK+3T (A1)	2117	1324	111
5	3BHK+STAFF (B2)	2519	1541	199

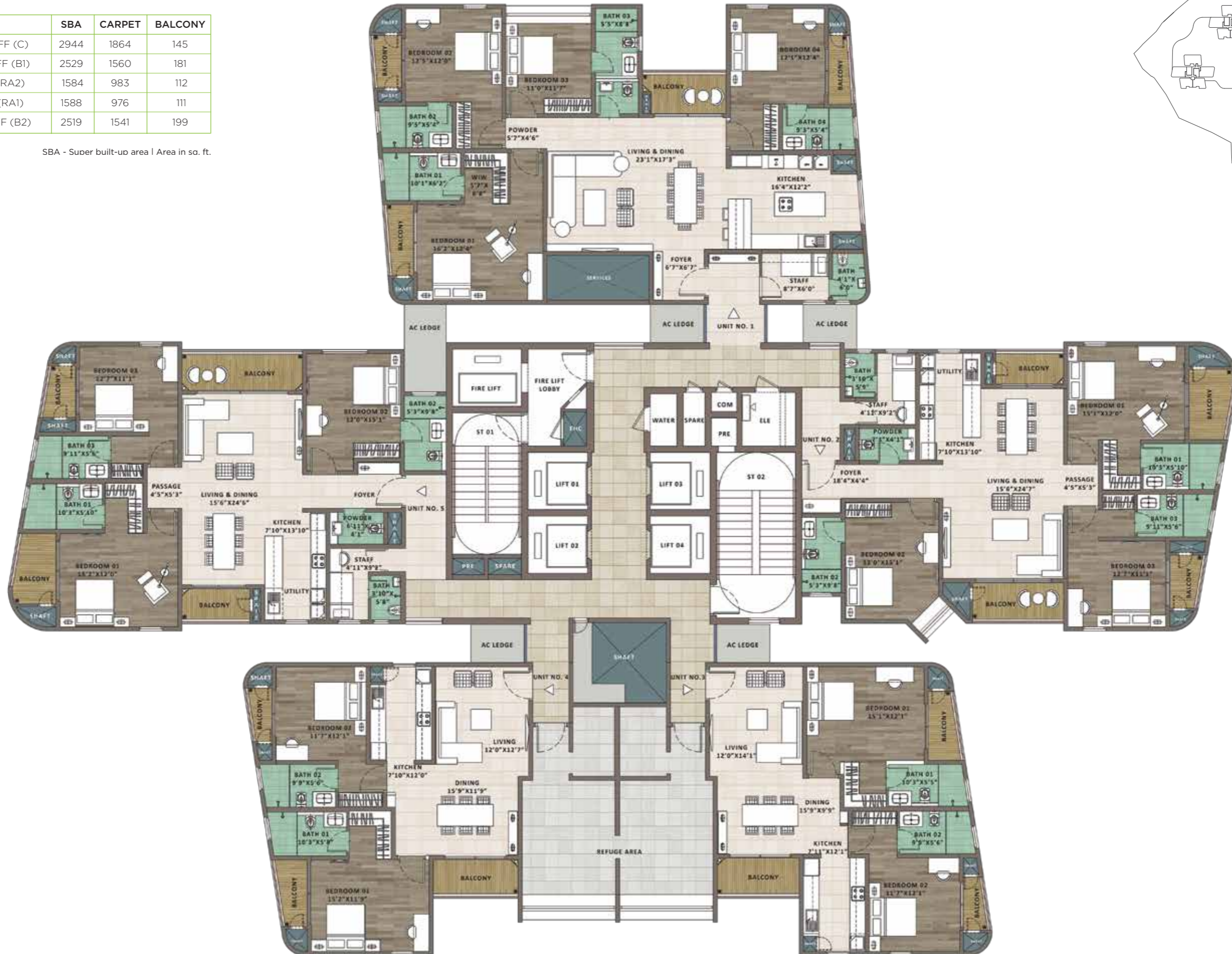
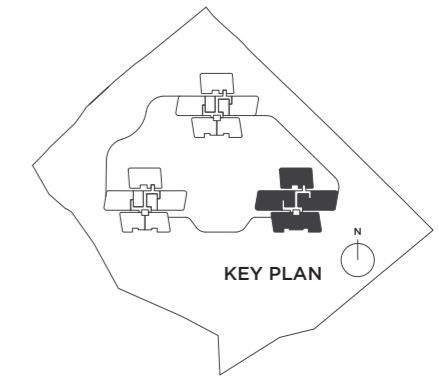
SBA - Super built-up area | Area in sq. ft.



# Tower B - Refuge 17<sup>th</sup> and 26<sup>th</sup> floor plan

SL NO.	TYPE	SBA	CARPET	BALCONY
1	4BHK+STAFF (C)	2944	1864	145
2	3BHK+STAFF (B1)	2529	1560	181
3	2BHK+2T (RA2)	1584	983	112
4	2BHK+2T (RA1)	1588	976	111
5	3BHK+STAFF (B2)	2519	1541	199

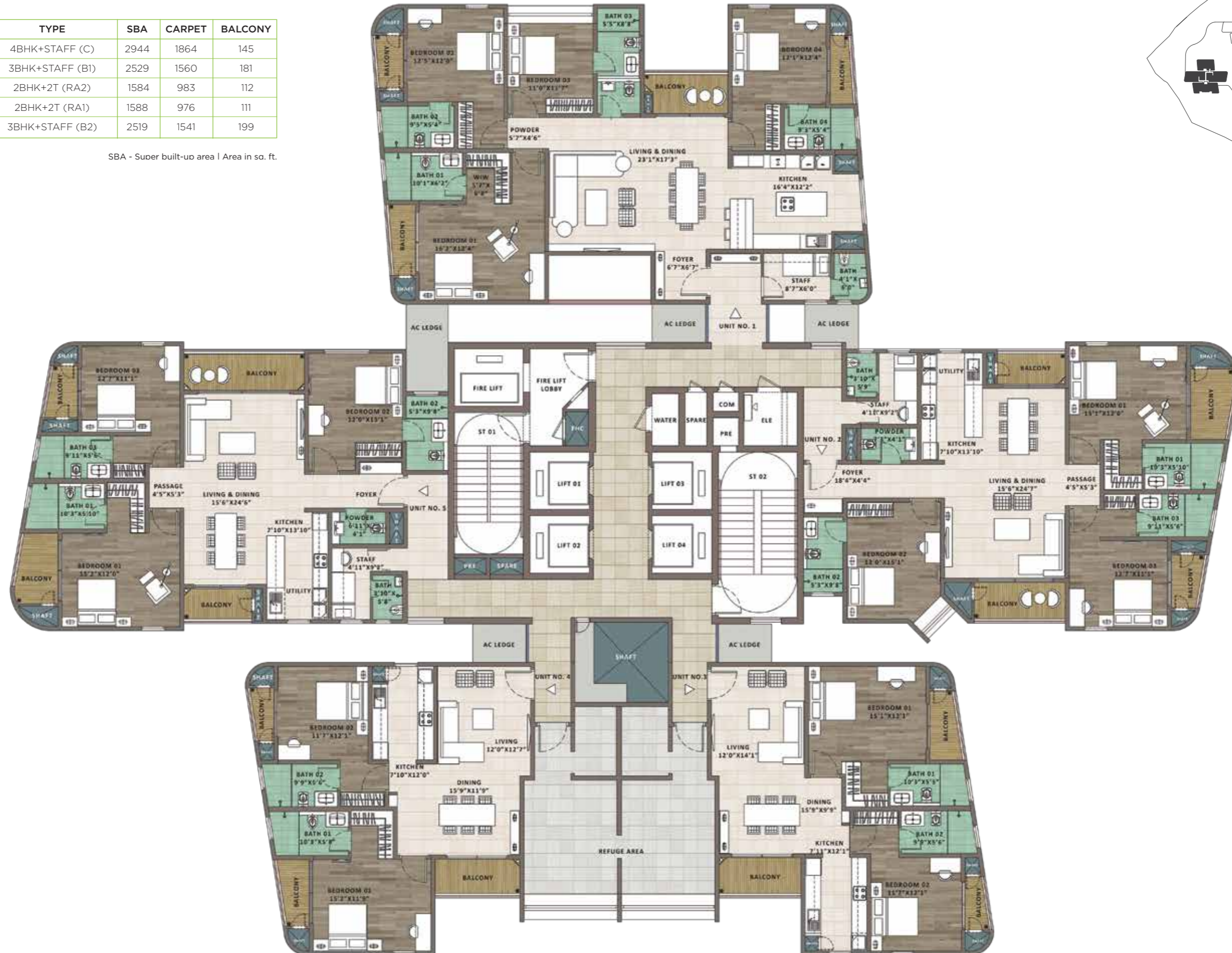
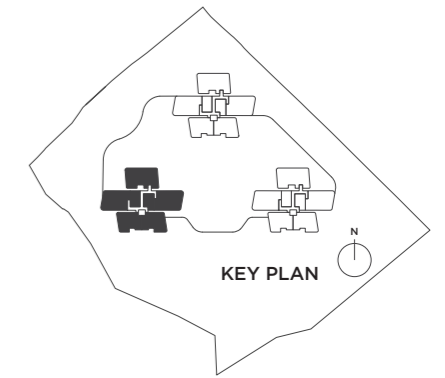
SBA - Super built-up area | Area in sq. ft.



# Tower C - Refuge 17<sup>th</sup> and 26<sup>th</sup> floor plan

SL NO.	TYPE	SBA	CARPET	BALCONY
1	4BHK+STAFF (C)	2944	1864	145
2	3BHK+STAFF (B1)	2529	1560	181
3	2BHK+2T (RA2)	1584	983	112
4	2BHK+2T (RA1)	1588	976	111
5	3BHK+STAFF (B2)	2519	1541	199

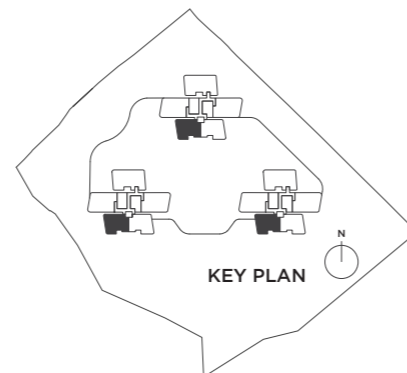
SBA - Super built-up area | Area in sq. ft.



2 BHK+2T - Type RA1



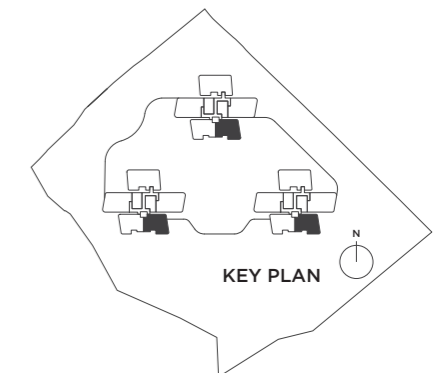
SBA	1588 sq. ft.
CARPET	976 sq. ft.
BALCONY	111 sq. ft.



2 BHK+2T - Type RA2



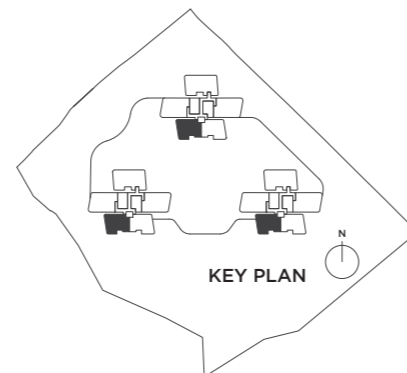
SBA	1584 sq. ft.
CARPET	983 sq. ft.
BALCONY	112 sq. ft.



3 BHK+3T - Type A1



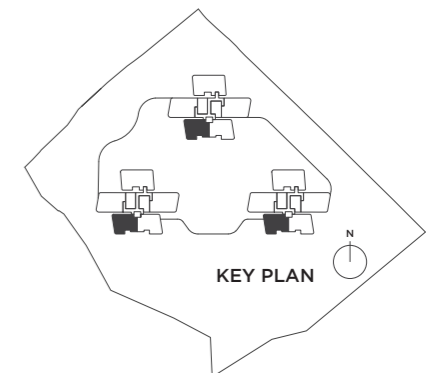
SBA	2117 sq. ft.
CARPET	1324 sq. ft.
BALCONY	111 sq. ft.



3 BHK+3T - Type A1\_T



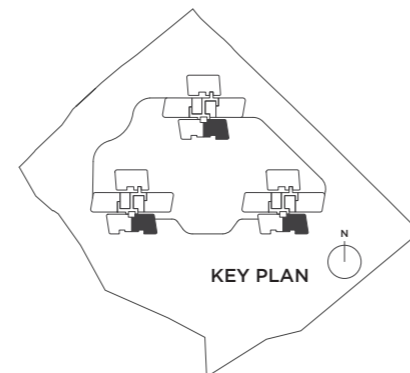
SBA	2117 sq. ft.
CARPET	1324 sq. ft.
BALCONY	111 sq. ft.
TERRACE	152 sq. ft.



### 3 BHK+3T - Type A2



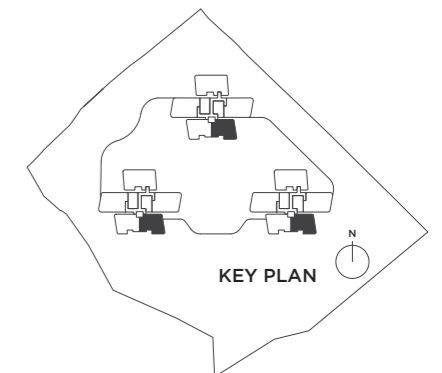
SBA	2118 sq. ft.
CARPET	1324 sq. ft.
BALCONY	112 sq. ft.



### 3 BHK+3T - Type A2\_T



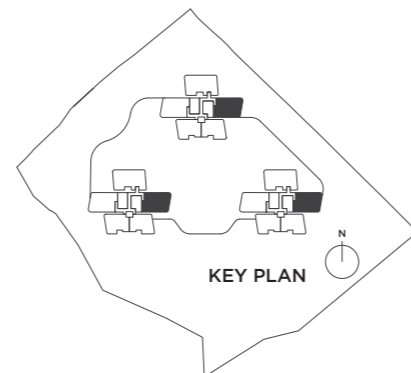
SBA	2118 sq. ft.
CARPET	1324 sq. ft.
BALCONY	112 sq. ft.
TERRACE	149 sq. ft.



### 3 BHK+STAFF - Type B1



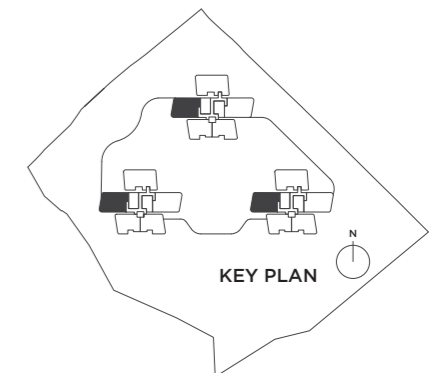
SBA	2529 sq. ft.
CARPET	1560 sq. ft.
BALCONY	181 sq. ft.



### 3 BHK+STAFF - Type B2



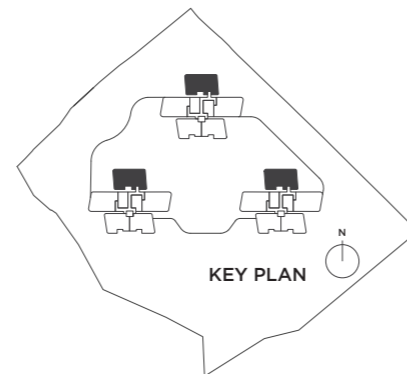
SBA	2519 sq. ft.
CARPET	1541 sq. ft.
BALCONY	199 sq. ft.



### 4 BHK+STAFF - Type C



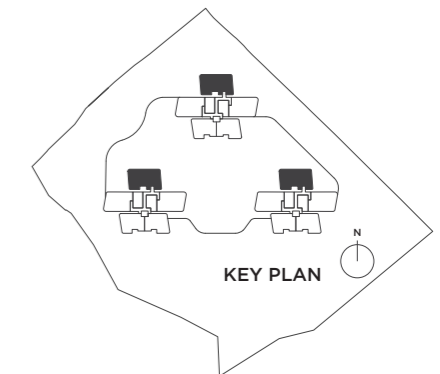
SBA	2944 sq. ft.
CARPET	1864 sq. ft.
BALCONY	145 sq. ft.



### 4 BHK+STAFF - Type C\_T



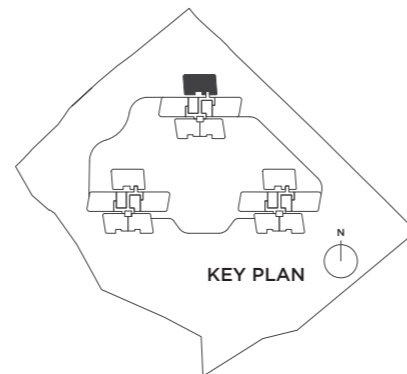
SBA	2944 sq. ft.
CARPET	1864 sq. ft.
BALCONY	145 sq. ft.
TERRACE	91 sq. ft.



### 3 BHK+3T - Type RC



SBA	2054 sq. ft.
CARPET	1279 sq. ft.
BALCONY	116 sq. ft.





CORPORATE OFFICE : Sattva Group, Sattva Windsor, No.3, Ulsoor Road, Bengaluru - 560 042 | Tel: +91 80 42699000

BENGALURU | HYDERABAD | MUMBAI | PUNE | CHENNAI | KOLKATA | GOA | COIMBATORE

[www.sattvagroup.com](http://www.sattvagroup.com) | Call Toll-Free No.: 1800 121 3344 | E: [enquiry@sattvagroup.in](mailto:enquiry@sattvagroup.in)



A Crisil 'A' STABLE RATED COMPANY  
Founding Member IGBC



An ICRA 'A' STABLE RATED COMPANY  
ISO 9001, 14001 & 18001 CERTIFIED

RERA No: PRM/KA/RERA/1251/310/PR/241225/008358