



BRIGADE

Building Positive Experiences









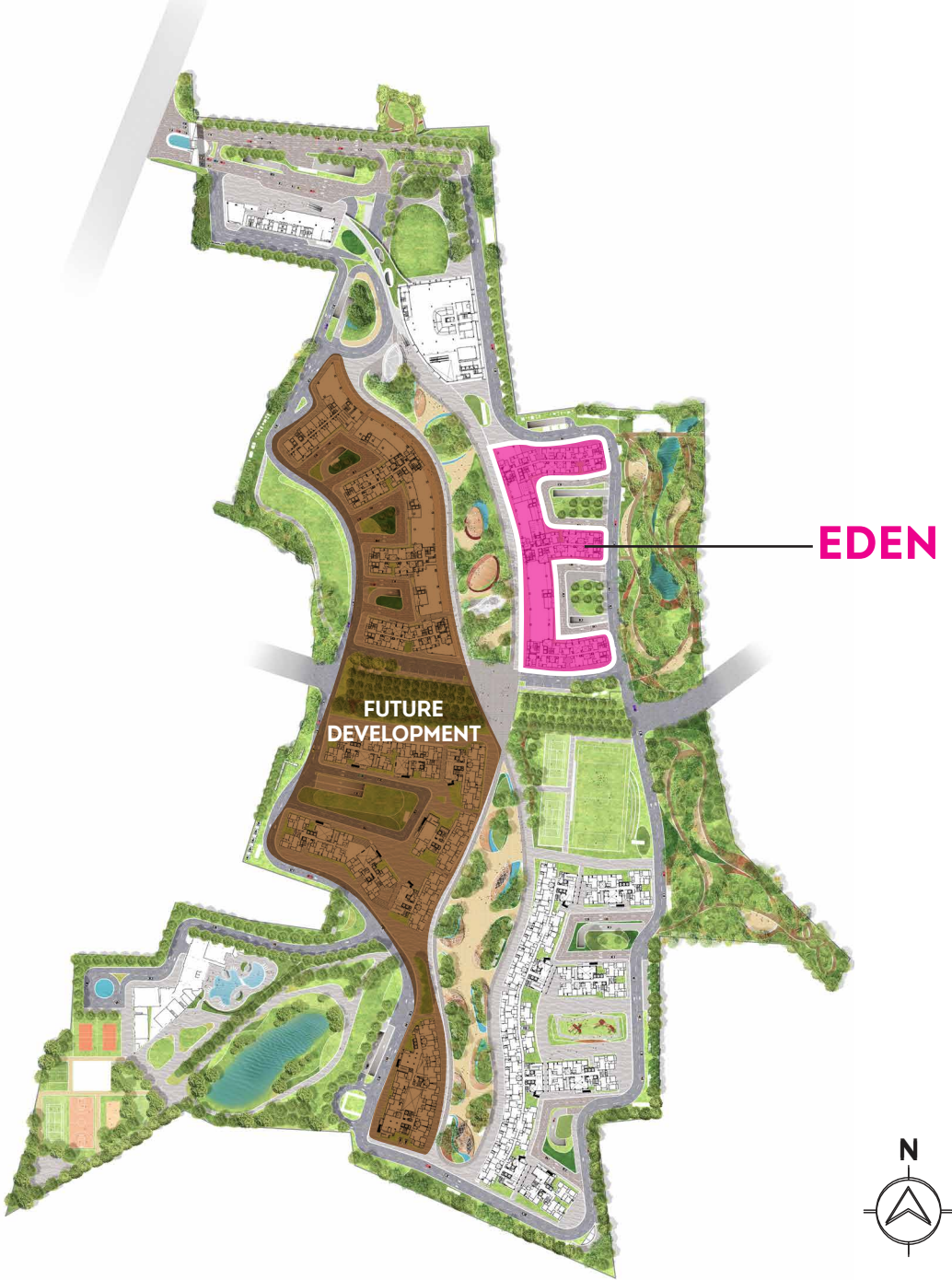
Boucher for Rera Registration

PROJECT BROCHURE

EDEN
AT
BRIGADE
CORNERSTONE
UTOPIA

MASTER PLAN

FEATURES	
	Swimming Pool
	Multi-purpose hall
	Fitness centre
	Residential
	Retail
	Small office



BRIGADE CORNERSTONE UTOPIA

The information depicted herein viz., master plans, floor plans, furniture layout, fittings, illustrations, specifications, designs, dimensions, rendered views, colours, amenities, and facilities, etc., are subject to change without notifications as may be required by the relevant authorities or the developer's architect, and cannot form a part of an offer or contract. Whilst every care is taken in providing this information, the Developer cannot be held liable for variations. All illustrations and pictures are artist's impression only. The information are subject to variations, additions, deletions, substitutions and modifications as may be recommended by the company's architect and/or the relevant approving authorities. The Developer is wholly exempt from any liability on account of any claim in this regard. (1 square metre = 10.764 square feet). E & OE.

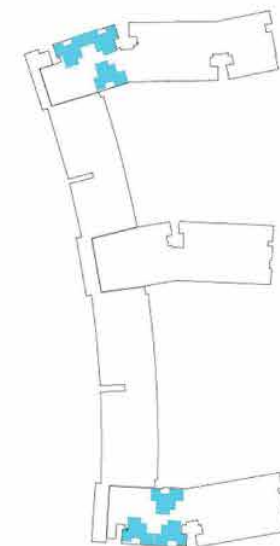
UNIT PLANS



RERA Carpet Area	435 Sqft (40.44 sq.m.)
Balcony Carpet Area	35 Sqft (3.22 sq.m.)
SBA Per Unit	749 Sqft (69.58 sq.m.)

BRIGADE CORNERSTONE UTOPIA | 1BHK SMALL

The information depicted herein viz., master plans, floor plans, furniture layout, fittings, illustrations, specifications, designs, dimensions, rendered views, colours, amenities, and facilities, etc., are subject to change without notifications as may be required by the relevant authorities or the developer's architect, and cannot form a part of an offer or contract. Whilst every care is taken in providing this information, the Developer cannot be held liable for variations. All illustrations and pictures are artist's impression only. The information are subject to variations, additions, deletions, substitutions and modifications as may be recommended by the company's architect and/or the relevant approving authorities. The Developer is wholly exempt from any liability on account of any claim in this regard. (1 square metre = 10.764 square feet). E & OE.



EDEN

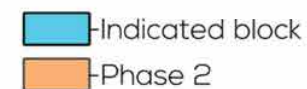


Indicated block
Phase 2

Key Plan 



RERA Carpet Area	450 Sqft	(41.87 sq.m.)
Balcony Carpet Area	35 Sqft	(3.22 sq.m.)
SBA Per Unit	765 Sqft	(71.07 sq.m.)



EDEN



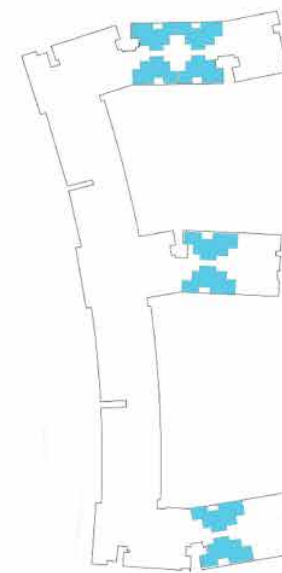
Key Plan 

BRIGADE CORNERSTONE UTOPIA | 1BHK SMALL (STUDIO UNITS)

The information depicted herein viz., master plans, floor plans, furniture layout, fittings, illustrations, specifications, designs, dimensions, rendered views, colours, amenities, and facilities, etc., are subject to change without notifications as may be required by the relevant authorities or the developer's architect, and cannot form a part of an offer or contract. Whilst every care is taken in providing this information, the Developer cannot be held liable for variations. All illustrations and pictures are artist's impression only. The information are subject to variations, additions, deletions, substitutions and modifications as may be recommended by the company's architect and/or the relevant approving authorities. The Developer is wholly exempt from any liability on account of any claim in this regard. (1 square metre = 10.764 square feet). E & OE.



RERA Carpet Area	635 Sqft (58.89 sq.m.)
Balcony Carpet Area	35 Sqft (3.22 sq.m.)
SBA Per Unit	1050 Sqft (97.54 sq.m.)



EDEN



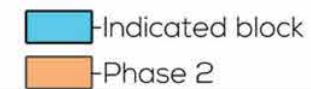
Indicated block
Phase 2
Key Plan (N)

BRIGADE CORNERSTONE UTOPIA | 2BHK SMALL 2

The information depicted herein viz., master plans, floor plans, furniture layout, fittings, illustrations, specifications, designs, dimensions, rendered views, colours, amenities, and facilities, etc., are subject to change without notifications as may be required by the relevant authorities or the developer's architect, and cannot form a part of an offer or contract. Whilst every care is taken in providing this information, the Developer cannot be held liable for variations. All illustrations and pictures are artist's impression only. The information are subject to variations, additions, deletions, substitutions and modifications as may be recommended by the company's architect and/or the relevant approving authorities. The Developer is wholly exempt from any liability on account of any claim in this regard. (1 square metre = 10.764 square feet). E & OE.



RERA Carpet Area	330 Sqft	(30.85 sq.m.)
SBA Per Unit	524 Sqft	(48.68 sq.m.)



Key Plan 



BRIGADE CORNERSTONE UTOPIA | Studio Apartment

The information depicted herein viz., master plans, floor plans, furniture layout, fittings, illustrations, specifications, designs, dimensions, rendered views, colours, amenities, and facilities, etc., are subject to change without notifications as may be required by the relevant authorities or the developer's architect, and cannot form a part of an offer or contract. Whilst every care is taken in providing this information, the Developer cannot be held liable for variations. All illustrations and pictures are artist's impression only. The information are subject to variations, additions, deletions, substitutions and modifications as may be recommended by the company's architect and/or the relevant approving authorities. The Developer is wholly exempt from any liability on account of any claim in this regard. (1 square metre = 10.764 square feet). E & OE.



TO UPGRADE TO BRIGADE, reach us on 1800 102 9977 | email: salesenquiry@brigadegroup.com
