

**Sobha** new project coming up near to [#Hosakote](#) Tollplaza

Area: 48Acres

Units: 5406

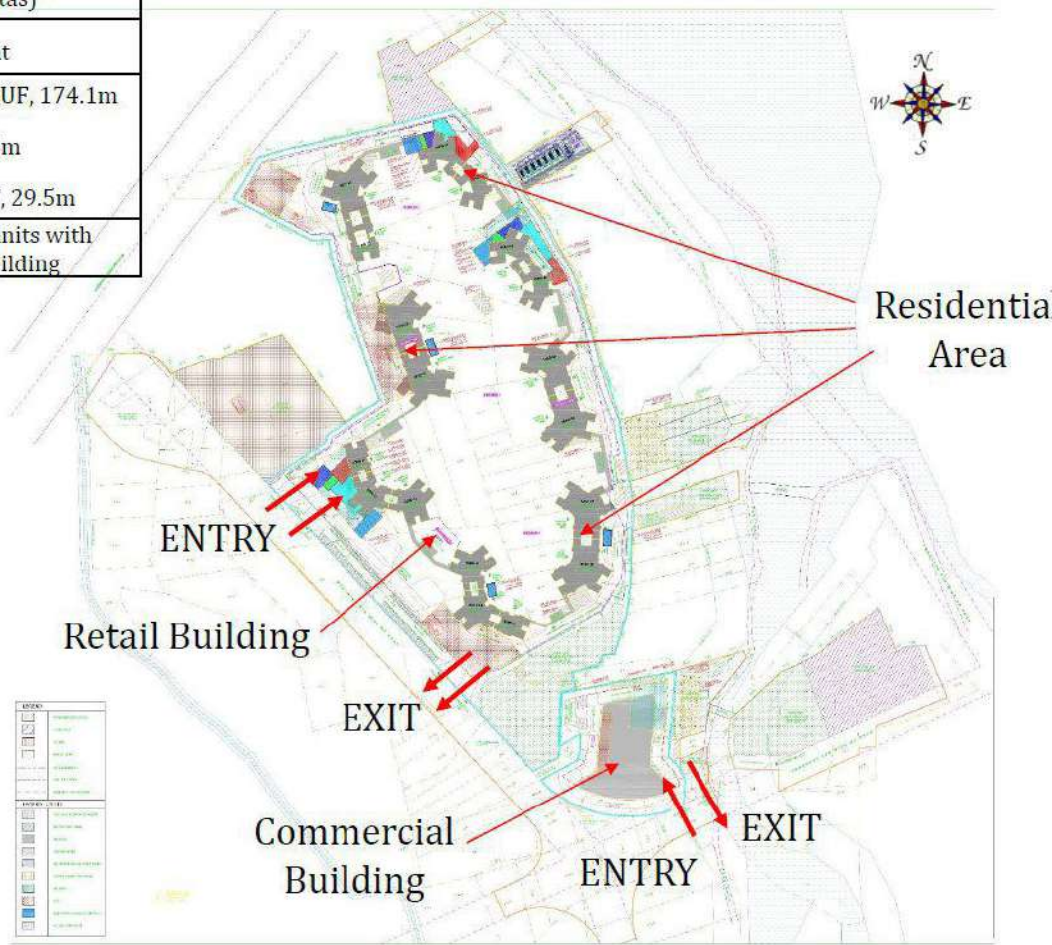
Config: 18towers - 3B+ GF+54UF

Retail - G + 1UF

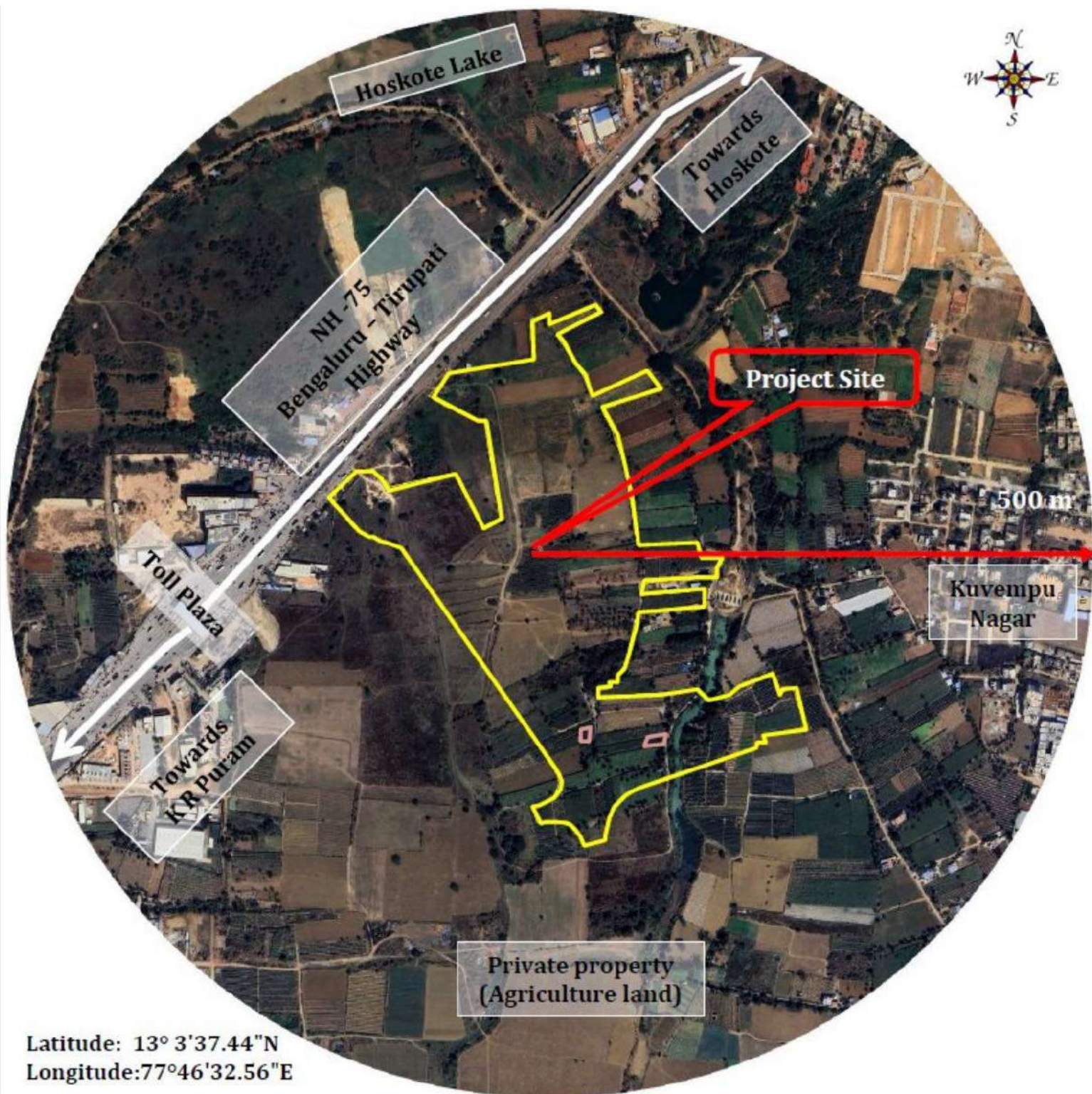
Commercial: G+4UF

# CONCEPT SITE PLAN

|               |   |
|---------------|---|
| Site area     | 1,97,360.26 Sqmt<br>(48 Acres 30.75 Guntas)   |
| BUA           | 13,12,974.88 Sqmt   |
| Configuration | Apartment Units - 3B+GF+54UF, 174.1m<br>Retail Building - G+1UF, 7.95m<br>Commercial Building -G+4UF, 29.5m |
| No. of units  | 5,406 Nos. of residential units with<br>retail & commercial building  |







---

Sobha is set to come up with Bengaluru's tallest towers near Hoskote, OMR Bengaluru

13 Towers: 3G+G+53 Floors each  
Height of each tower: 175 mtrs each  
Total number of units: 5406 units  
48 acres of land

---



